

NOTES:

- Electrical per NEC standards
- All fall protection per IBC Section 1014
- Lower level wall height = 9'
- Upper level parapet wall height = 4'

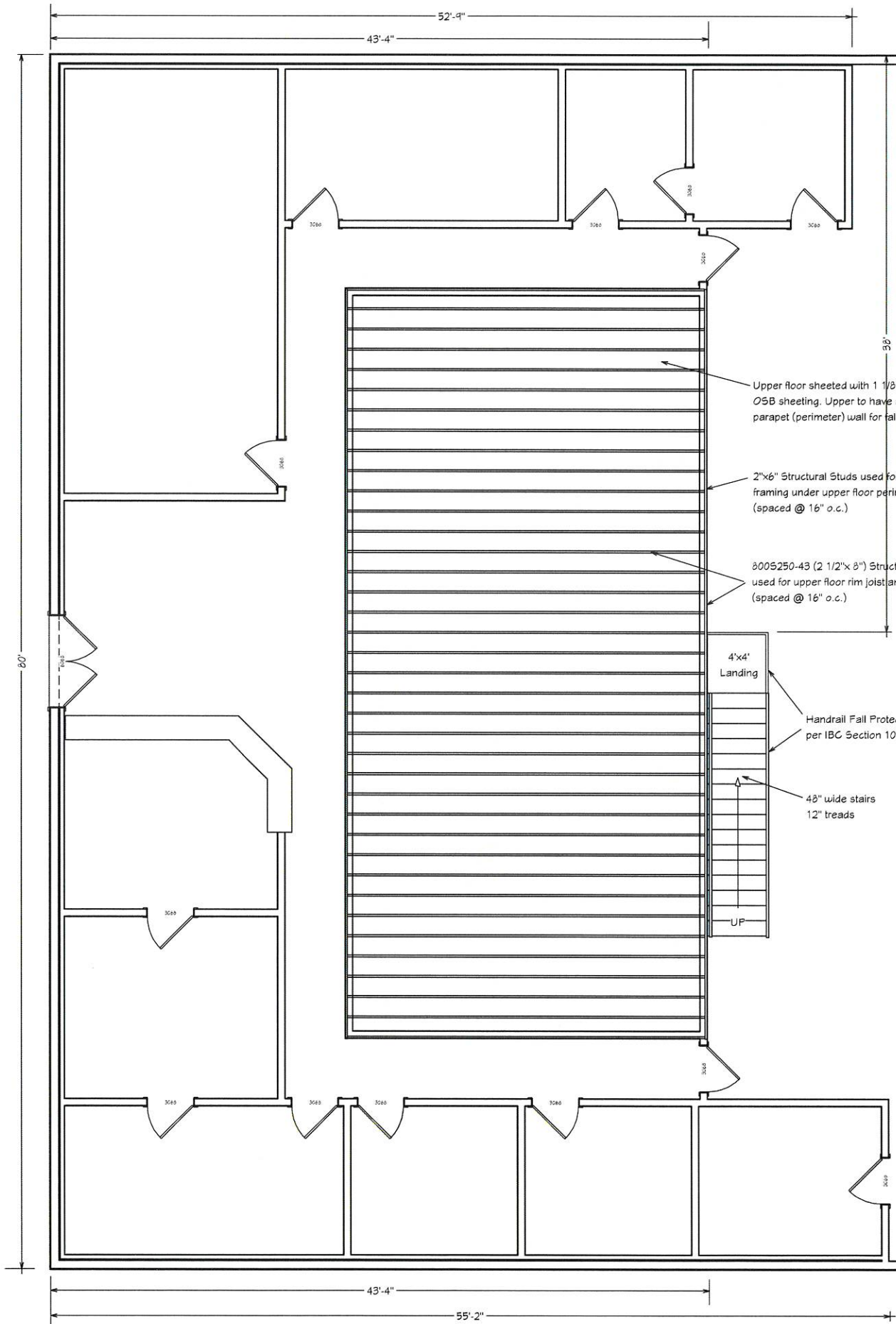
□ = Light Fixture (TBD)

NUMBER	DATE	REVISION TABLE	REVISOR	DESCRIPTION

DUCK VALLEY
IRRIGATION SHOP

MAIN FLOOR PLAN

DATE:	6/7/2020
SCALE:	1/4" = 1'
SHEET:	1



- Upper floor sheeted with 1 1/8" thick T&G OSB sheeting. Upper to have a 48" tall parapet (perimeter) wall for fall protection.
- 2"x6" Structural Studs used for lower floor framing under upper floor perimeter walls (spaced @ 16" o.c.)
- 8005250-43 (2 1/2" x 8") Structural Studs used for upper floor rim joist and floor studs (spaced @ 16" o.c.)
- 4'x4" Landing
- Handrail Fall Protection per IBC Section 1014
- 48" wide stairs
12" treads

REVISION TABLE	NUMBER	DATE	REVISOR	DESCRIPTION

DUCK VALLEY
IRRIGATION SHOP

UPPER FLOOR PLAN

DATE:
6/7/2020

SCALE:
1/4" = 1'

SHEET:
2