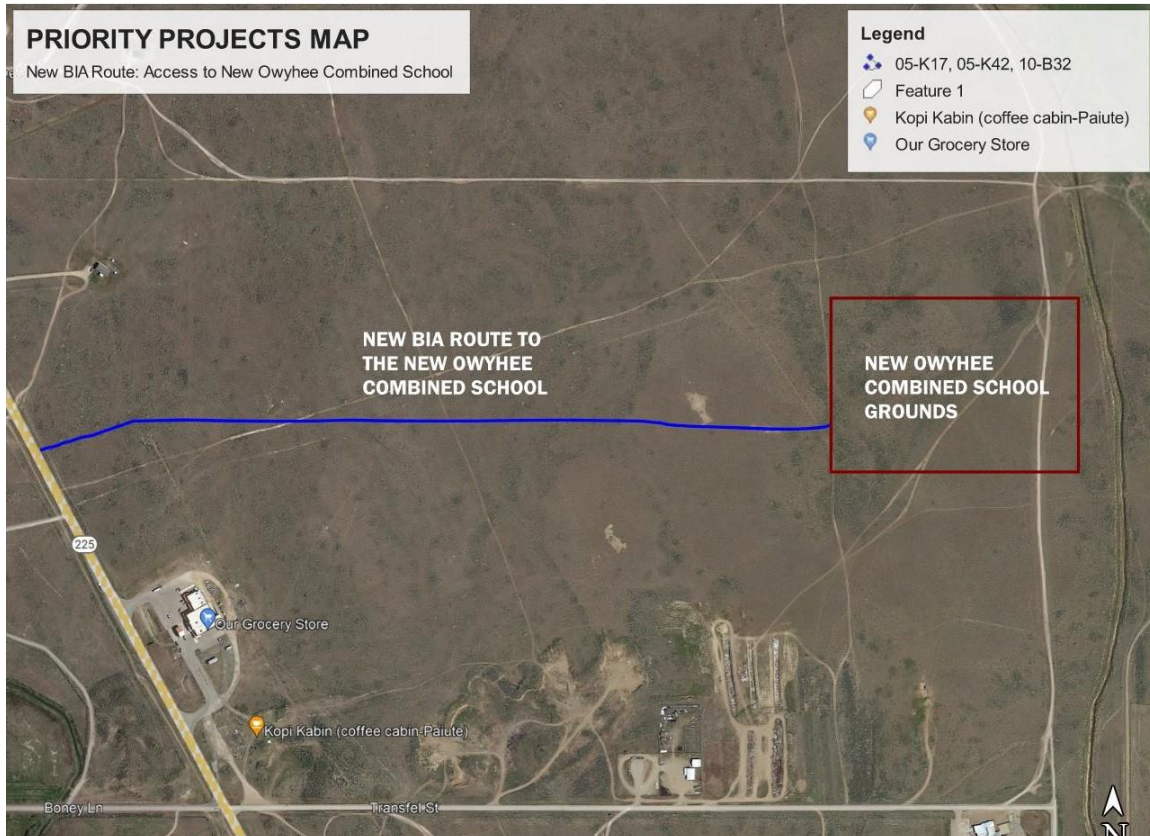


Shoshone-Paiute Tribes Long Term Transportation Improvement Plan (LRTP) and Projects Update – 30-Day Comment Period

Action: The Shoshone-Paiute Tribes, in collaboration with the BIA and Federal Highways, is updating the Tribe’s Long Range Transportation Plan (LRTP).

This update is solely to incorporate the **new road to provide access to the planned Owyhee Combined School off SH-225** (see figure below).



Summary: The Shoshone-Paiute Tribes objective is to allow the public to review the updated LRTP, at the location noted further below, and receive feedback. All comments and concerns will be addressed by the Tribes.

For Review of the Updated Plan and Additional Information: A copy of the LRTP can be viewed by contacting Jessie Jones or Renee Thomas, at (208) 759-3100. Their office is located at the Shoshone-Paiute Tribes Projects Department.

Comments: Comment sheets will be available at the Shoshone-Paiute Tribes Projects Department. The 30-day comment period will end May 13, 2024.

